

Hybrid Inverter



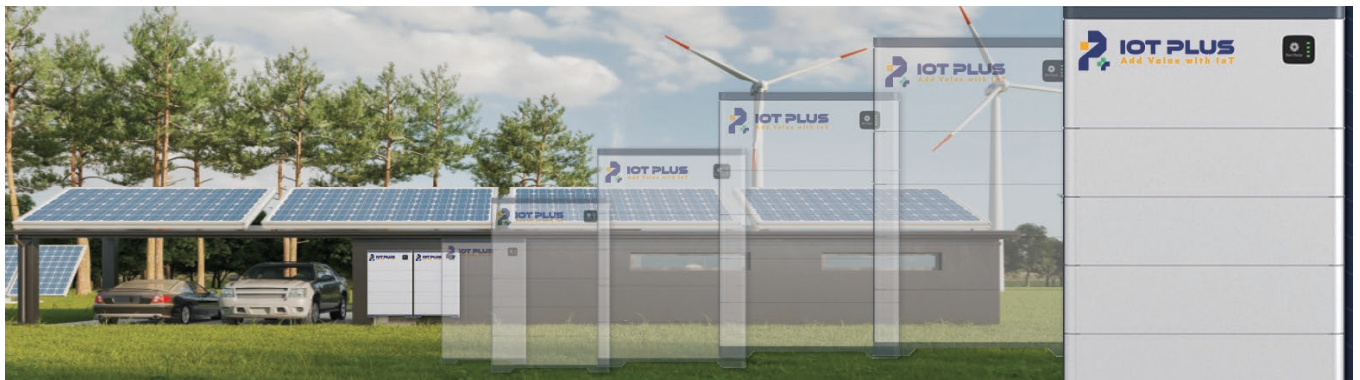
ENplus(Hi - 1015)

An all-in-one system integrating renewable energy and grid power with ESS for efficient energy storage and use.

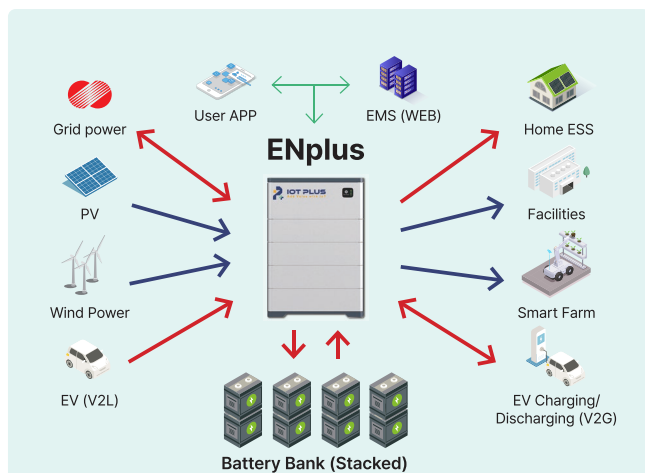


ENplus(HiD - 5050)

A system that stores renewable energy, grid power, EV, etc in an ESS for Home ESS. It can also be used as standalone portable power.



Configuration



- PCS(Power Conversion System)
- ESS(Energy Storage System)
- PMS(Power Management System)
- EMS(Energy Management System)
- V2L(Vehicle to Load)
- Safety Sensor & Safety Switch

Features

Various input sources 	Scalability
Battery 	Management

EMS Screen



System to realize energy welfare in rural areas using renewable energy and ESS



Expected Benefits

- Free charging for rural e-mobility
- Reducing power costs for village public facilities
- Supporting the use of local currency
- Contributing to NET ZERO

Specifications

Classification		Hi-1015	HiD - 5050
AC Input (Power Supply / Grid Side)	Rated (Continuous) Power	5kw	5~50kw
	Voltage & Frequency	1 ph AC 170-280V -10%/+15%, 50/60Hz ±5%	1 ph AC 170-280V -10%/+15%, 50/60Hz ±5%
	Max. Input Current	40 Arms	56 Arms
	Power Factor	>0.99(@ Nominal)	>0.99(@ Nominal)
AC Output (Load Side)	Rated (Continuous) Power	5 kW	7 kW
	Voltage & Frequency	1ph AC 220/230/240V ±5%, 50/60Hz ±0.1%	1ph AC 220/230/240V ±5%, 50/60Hz ±0.1%
	Rated Output Current	21 Arms	29 Arms
	DC-AC Conversion Efficiency	95%	95%
Battery	Energy Capacity	9.2kWh/13.8kWh(10~15kWh)	-
	Cell Type	Lithium-ion	-
	Input Voltage Range	DC 44.96 ~ 55.4V (DC 51.1V nom)	-
	Overcharge Protection	DC 62V	-
	DC-AC Conversion Efficiency	93%	-
PV Input (MPPT)	Max. Input Power	5kW	50kW
	MPPT Voltage Range	DC 120~430V	DC 120~430V
	Maximum / PV Open-ckt Voltage	DC 450V	DC 450V
	Max. Input Current	40 Adc	56 Adc
Wind Power	Max. Input Power	-	50kW
	Max. Input Current	-	23 Arms
V2G	Max. Input Power	-	5kW
	Max. Charging Power	-	7kW
V2L	Max. Input Power	-	3.6kW
Mechanic Chrs	Dimension (W xH xD) / Weight (Approx.)	700x1312x298mm/150kg(10kWh)	500x500x500mm(50 ~ 100kWh)
Environment	Enclosure Protection Rating	IP21 (Indoor Installation)	IP21 (Indoor Installation)
	Operating Ambient Temperatures	-10 ~ +50 dec C	-10 ~ +50 dec C
Compatible Standards	EMC	IEC/KN 61000-6-2, CISPR/KN 11	IEC/KN 61000-6-2, CISPR/KN 11
	Safety	IEC/K 62477-1(2011-12)	IEC/K 62477-1(2011-12)

